

MILANO
CERAMIC ROOF TILES

Roben

deeper
and higher locks

larger format

allows the use
of different
fixing brackets

displacement
tolerance of up to 41 mm

aesthetic and solid appearance

MILANO
CERAMIC ROOF TILES

NEW

Factory:
Röben Polska Sp. z o.o. i Wspólnicy Sp. k.
55-300 Środa Śląska, Ceramiczna Street 2
phone no. 71 39 78 100, fax no. 71 39 78 111
e-mail: biuro@roben.pl
www.en.roben.pl

Watch roofing
photo gallery:



08.2024


Economical
in arrangement


Classic
aesthetics


Traditional
„S-shaped”

MILANO / Natural red engobed



Technical data*

Weight (1 item)	ca. 3.90 kg
Total length	ca. 46.6 cm
Total width	ca. 30.6 cm
Length of cover	ca. 35.7-39.8 cm
Average width of cover	ca. 24.3 cm
Minimum design value/m²	ca. 10.3 items
Quantity/m ²	ca. 10.3-11.5 items
Minimum roof inclination angle	up to 22°
Quantity/EURO pallet	240 items
Weight per sqm	ca. 40.2-44.9 kg
Weight of full pallet	ca. 966 kg
Frost resistance	yes

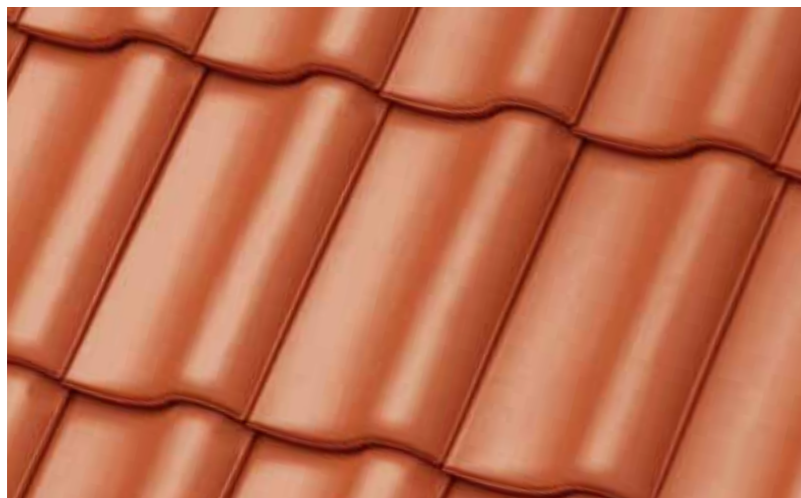
41 mm
DISPLACEMENT
TOLERANCE



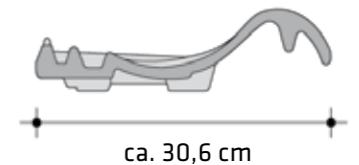
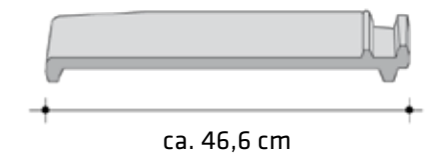
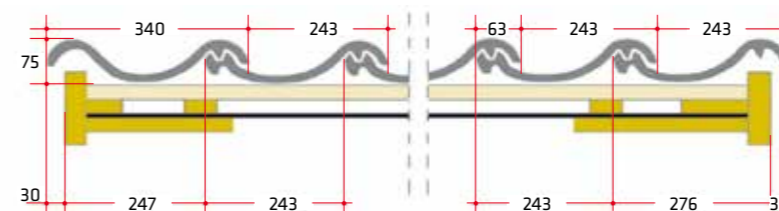
Elegant, traditional
effect of wavy
lines

* technical parameters may be slightly changed

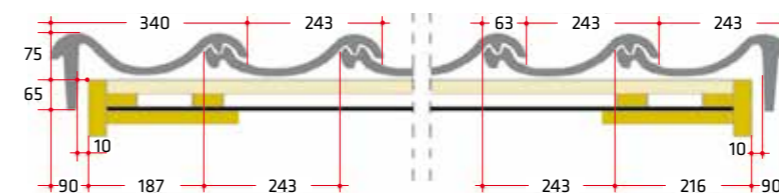
MILANO / Copper engobed



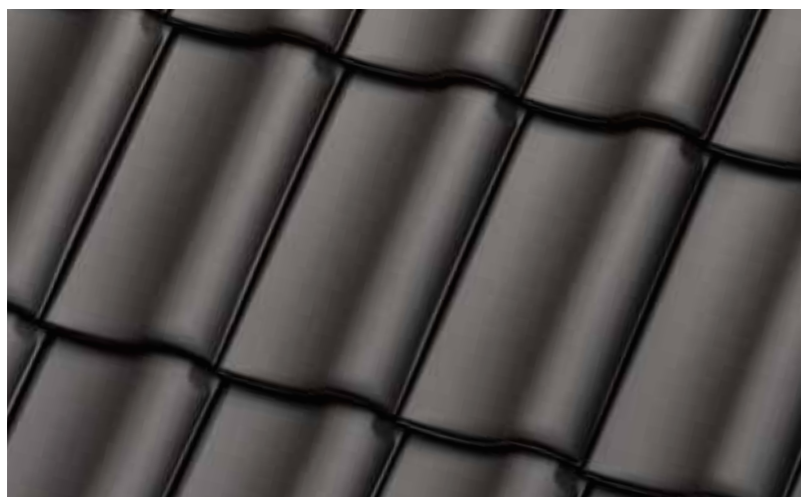
Extreme roof tile



Double Roman roof tile



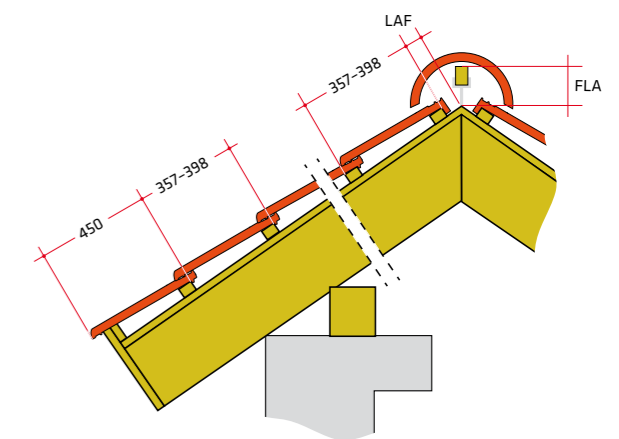
MILANO / Anthracite engobed



Cross-section of the roof cover.

Proper assembly depends, inter alia, on the shape of the roof and location of the house, which is why it may be different from the solutions presented here. The best option is to consult a qualified roofer. Please read the guidelines for proper roof ventilation.

Details can be found in the information sheets at www.en.robent.pl



Roof battens 30x50 mm

MILANO	LAF/FLA (mm)											
Roof inclination angle	10°	14°	18°	22°	25°	30°	35°	40°	45°	50°	55°	60°
GAŠIOR												
LAF	58	58	56	56	56	56	54	54	54	54	54	54
FLA	164	158	152	146	142	136	130	124	116	110	104	98

Roof battens 40x60 mm

Roof battens 40x60 mm												
Roof inclination angle	10°	14°	18°	22°	25°	30°	35°	40°	45°	50°	55°	60°
LAF	56	54	52	52	50	48	46	46	46	44	44	44
FLA	174	168	162	158	152	148	142	136	132	126	122	118